



- 8-ounce, 50/50 cotton/poly
- Double-needle stitching at waistband and cuffs
- Double-lined hood
- No drawcord at hood
- 1x1 rib knit cuffs and waistband with spandex
- Front pouch pocket

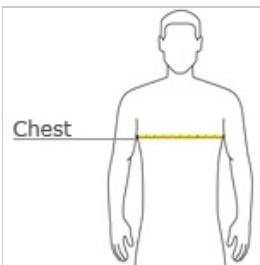


front



back

### HOW TO MEASURE



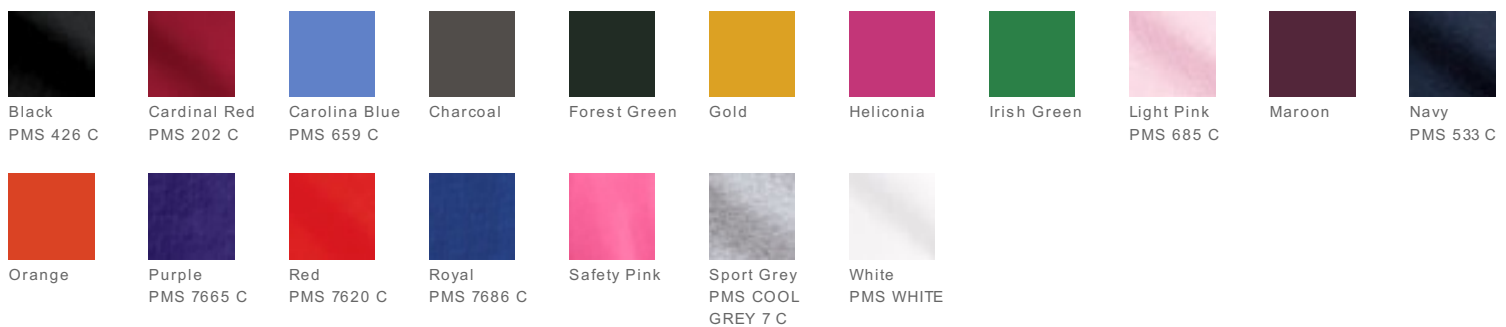
#### CHEST

With arms down at sides, measure around the upper body, under arms and over the fullest part of the chest.

### SIZE CHART

	XS	S	M	L	XL
Size	2-4	6-8	10-12	14-16	18-20
Chest	30-32	32-34	34-36	36-38	38-40

### COLOR INFORMATION



\*Not all sizes are available in every color.